



# Our NEW isolved release goes live:

**September 22, 2023**

Release v9.18 has some exciting new additions! We are working hard to provide the best tools for you and your team.

## In this release:

- NY MCT ER Tax – Support of Zone 1 and 2
- BIPA Update
- Predictive People Analytics Front End
- Screen Updates

## Tax

### NY MCT ER Tax – Support of Zone 1 and 2

NY MCTMT has been broken into Zone 1 and Zone 2 to prepare for Q3 reporting. Right now, both zones are pulled into a single zone.

Note: if the client has run the last payroll of the quarter, an adjustment run will need to be completed. This will only apply to companies who use NY taxes. Going into Q4, the amounts will calculate automatically.

## Time

### BIPA Update

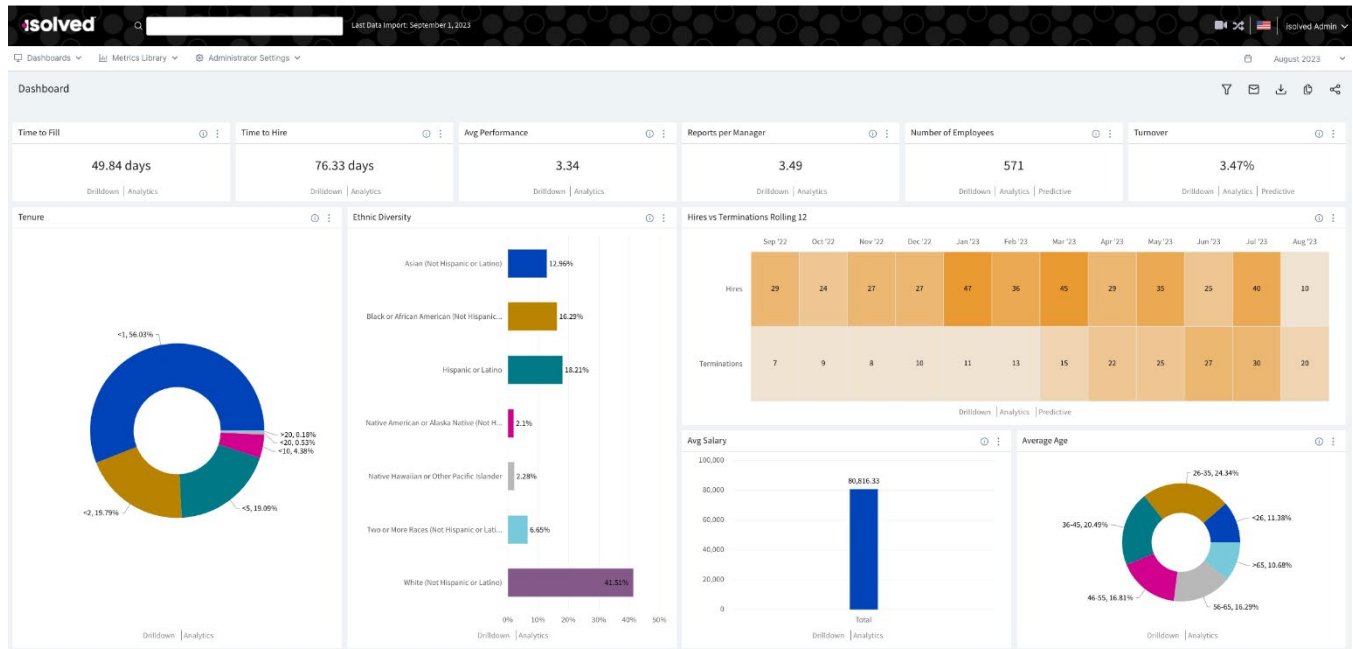
There will be a new report added this week called, “Employee Consent Export”. This report focuses on BIPA consents and includes information about the employment status, Clock Settings, Consent Accepted/Declined, and more!

The next phase is to delete templates for employees that have not consented (manually or at the clock) to use the touchpad for clocking in.

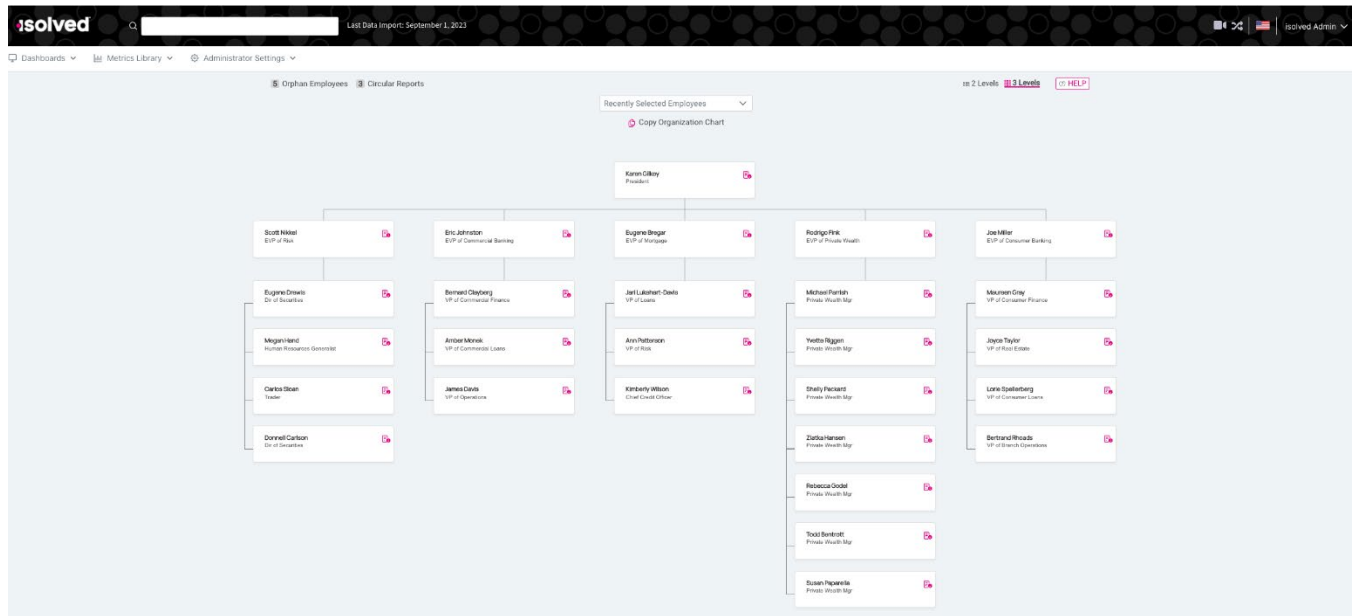
## Predictive People Analytics Front End

We have been working on improving the speed and aesthetic of PPA to further refine the feel. In addition to front end changes, the Drilldown, Analytics, and Predictive options are now available for quick access information at the top of the dashboard. Clicking on the quick access information presents the user with an in depth look at the data used to create the quick access information.

### PPA Dashboard



PPA Org Chart: The Org Chart has gotten minor visual updates to make it blend with the Dashboard more seamlessly.



## Screen Updates

Over the next few months, you will see that we are refreshing several screens, moving them to a more modern look using the new grid style that you have already seen on other newer screens. The overall functionality stays the same with some differences noted below.

This is an example of the new screen, where you can sort, filter, group, and view all pieces of information:

Prior Employment isolved University

Expand All Groups Collapse All Groups Clear Grouping/Filters

Drag a column header here to group by that column

Employer	Job Title	Job Description	Start Date	End Date	Ending Salary	Change Reason	Manager/Reference	Location
ABC Finance Company	Project Manager		1/16/2012	6/25/2020		Reduction in staff		
Big Box Retailer	Stockperson		12/5/2010	1/15/2012	\$10.00 per hour	Finished school		

The screens that will be updated with this release:

- **Client Management > Tables > Misc Employee Fields:** Updated Grid Layout. Users can export data.
- **Employee Management > Employee Benefits > Life Events:** Updated Grid Layout. Users can export data.
- **Client Management > Benefits > Accrual Plans:** Updated Grid Layout. Users can export data.



## 9.19 Sneak Peek

We are still working on new items for release v9.19 on October 6<sup>th</sup>. Please check the next newsletter for more information.

### Identity Phase 2 – Two Factor Authentication

With the upcoming release of Identity Phase 2, we are increasing our security for logging in and will be requiring two factor authentication for every log in. This will help to increase the security of our systems to a standard that is already being used by many tech companies. Two factor authentication uses a second method of authenticating the user's identity to prevent unauthorized access to the isolved system.